



Multispeciality
Charitable
Hospital

**vision for
tomorrow**

**Jankalyan
Seva Sanstha**

Easing Healthcare

At Dr. Hedgewar Hospital, we have always believed that service is not a reaction it's a responsibility. For over a decade, we've walked alongside the underserved, the unseen, and the unheard in Vidarbha. And what began as a humble effort has now grown into a movement where not for profit is not just sustainable, but inspirational.

Today, we stand at a new threshold. With **Project 150**, we aren't just adding beds or buildings we're building trust, dignity, and access for millions in rural Maharashtra. This isn't merely healthcare infrastructure it's a declaration that quality healthcare is every Indian's right, not a privilege.

We invite you to walk with us in this journey. To believe with us that empathy can scale. That hope can be architected. That your support be it thought, word, or deed—can shape lives, one heartbeat at a time.

Come, be part of this story as a changemaker.



Shri. Ajay Shrof
President
Jankalyan Seva Sanstha



Shri. Govind Jog
Secretary
Jankalyan Seva Sanstha

Amravati

Remote Villages

Centre of India but still
Too Far to Reach. Too Late to Save



90%

Rural Public
Has no Insurance

Only 25%

Rural & Semi Rural Public
has access to modern
healthcare within their
localities.

10%

Rural Public
has no access to modern
healthcare 10 km radius.

Only 44%

Institutional Deliveries
Take Place in Rural Areas
of Western Vidarbha

14.65%

Child Death Rate
In Melghat Tribal
Zone Near Amravati

54%

Infant Mortality Rate
in Rural maharashtra
Surrounding Amravati

Project 150 is Dr. Hedgewar Hospital's ambitious leap into the future of equitable healthcare. A mission to build a state-of-the-art 150+ bed charitable hospital that not only expands our capacity but expands our impact canvas across Western Vidarbha.

It is not just about infrastructure it's about intention
To bring 15+ specialties under one roof, making advanced care accessible to the underserved.
To create a hub of excellence that attracts passionate medical professionals who believe in service over status.

we can build a future where charity and excellence walk hand in hand.

To empower families from rural and semi-urban communities with care that is both affordable and dignified.

To ensure that no one is turned away, not because of where they come from, but because we're here to receive them.

WE
PROMISE



That compassionate care doesn't need to wait.
That the heart of India deserves the best of medicine.



Helping Hand Gesture



AC PRIVATE
ROOMS & SUITES

DAYCARE &
DIALYSIS

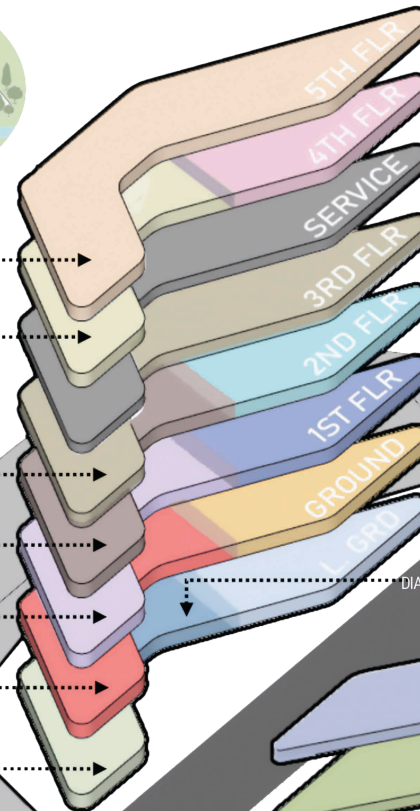
GENERAL WARDS

LABORATORIES

INTENSIVE CARE
UNITS (ICU's)

EMERGENCY

MORTUARY &
SERVICES



ADMIN

MATERNITY
WARD

OPERATION
THEATRES
(O.T.'s)

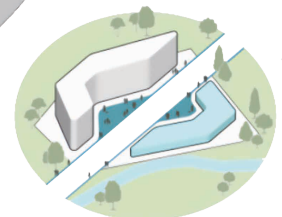
O.P.D.'s

STAFF AREA

ACCOMODATION

CONVENTION
CENTRE

DIAGNOSTICS



Care Umbrella

Spectrum 150

GENERAL SPECIALTY

Emergency Department
Expansion with state-of-the-art trauma bays and advanced critical care protocols. Implementation of comprehensive emergency medicine training programs.

Out Patient Department (OPD)
Addition of modular consultation rooms and integration of Geographical patient stratification and management systems.

ICU/CCU
Upgraded with ECMO (Extracorporeal Membrane Oxygenation) systems and advanced hemodynamic monitoring equipment. Increased bed capacity with negative pressure isolation rooms.

Diagnostic Centre
Introduction of 3 Tesla MRI, dual-energy CT scanners, and next-generation sequencing (NGS) for comprehensive diagnostics. in Pathology, Microbiology & Biochemistry

Surgery & Allied Consultancy
New hybrid modular operating theaters with intraoperative imaging and minimally invasive surgery systems.

Internal Medicine & Allied Consultancy
Expansion of telemedicine services with AI diagnostic support and integrated care pathways.

Gynaecology and Obstetrics
Modern birthing suites with wireless fetal monitoring, Painless Delivery & Fertility Lab

Orthopaedics & Trauma Care:
Advanced orthopedic surgery with 3D-printed implants and augmented reality (AR) surgical navigation.

Dental & Maxillofacial Unit
Dental radiography and CAD/CAM systems for precise dental restoration. Comprehensive maxillofacial surgical facilities includin CBCT, RVG, OPG, Imaging.

Pediatrics
Specialized pediatric care support and advanced pediatric cardiology services & neonatal intensive care units (NICU) with high-frequency oscillatory ventilation.

ENT (Ear, Nose, Throat)
Introduction of high-definition video endoscopy and cochlear implant programs with minimally invasive surgical techniques, audiometry, BERA , otoacoustic emmision testing

Ophthalmology
Cutting-edge laser eye surgery with femtosecond lasers and advanced retinal imaging systems, Phacosurgery, Optometry, Eye Donation & Corneal Transplant.

Psychiatry
Development of a neuropsychiatric center with transcranial magnetic stimulation (TMS) and electroconvulsive therapy (ECT). Expansion of addiction medicine and integrated behavioral health programs.

Physiotherapy & Rehabilitation
Advanced rehabilitation with organ system specific recovery program for comprehensive recovery.

TOTAL 150+ BEDS	5 BEDS CASUALTY	15 BEDS RECOVERY
	10 BEDS DIALYSIS UNIT	25 BEDS ICU
	67 BEDS GENERAL WARD	10 BEDS DAY CARE

SUPER SPECIALTY

Urosurgery & Nephrology
Expansion of dialysis units with hemodiafiltration and minimally invasive endo - urological surgeries.

Neurology & Neurosurgery
Implementation of neuro-navigation systems, and deep brain stimulation (DBS) units, Neuro surgical microscope

Cardiology & Cardiothoracic Vascular Surgery
Introduction of advanced Cathlab facilities and transcatheter aortic valve replacement (TAVR) capabilities.

Oncology & Oncosurgery
High end Cancer surgeries & Expansion of Chemotherapy and immunotherapy units.

Gastroenterology & Gastrointestinal Surgery
Advanced Endoscopy Suite with diagnostic and therapeutic facilities, Minimal Access GI surgical unit.

25 OPD	07 MAJOR OT
26 PRIVATE ROOMS	03 MINOR OT



Timeline Commitment

Bhumipujan

30th March 2024

Project initiated with all necessary compliances and architectural clearances at hand

Site Excavation

25th May 2024

Major excavation and foundation work started

Shell & Core

31st August 2025

Complete RCC structure shall be established with necessary planned outline for electrics and plumbing [MEP]

Today

Furnishings

30th January 2026

All the Systems and Medical equipments order procurement and installation, with inhouse system alignment

Hiring

28th Feb 2026

Phase 1 Hiring for new setup, Training of Human Resource Personnel

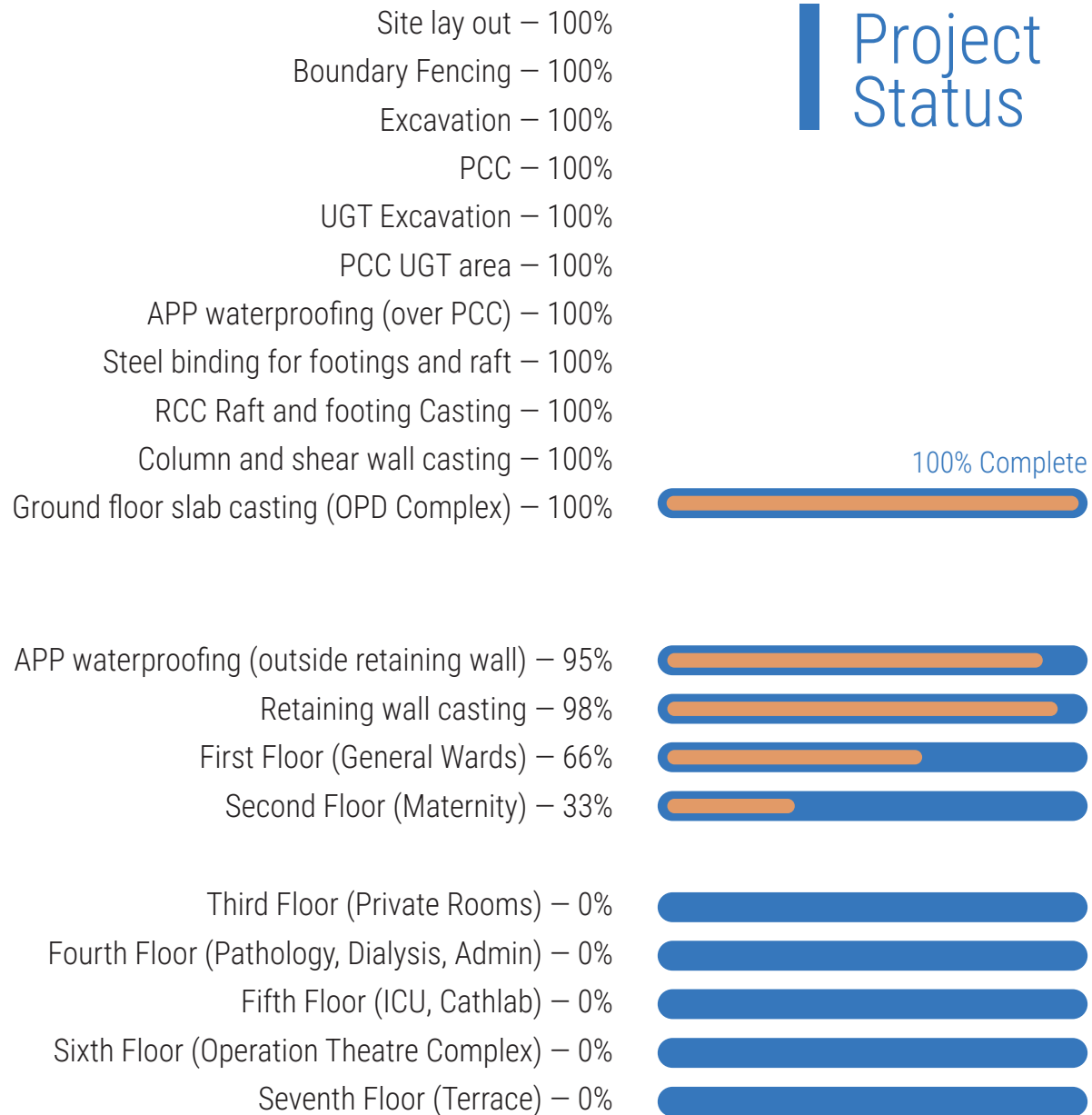
Testing & Operations

30th March 2026

Initial Testing and trial run with all the facilities and procedures in place. Liasoning and Statutory Approval



Project Status



Design Features



Patient-Centric Design

- Thoughtful layout for reduced patient movement
- Enhanced comfort, clear wayfinding, and calm environments



PT (Post-Tensioned) Slab Construction

- Maximizes floor height
- Eliminates bulky beams for flexible layouts



Tower Crane Installation

- Faster material mobilization during construction
- Reduces activity time and labor load



Pneumatic Tube System (First in Western Vidarbha)

- Rapid internal transfer of samples, documents, medicines
- Minimizes human error and turnaround time



Water and Waste Management

- Recycled water use for non-potable applications
- Effective waste disposal infrastructure



Green Building Vision

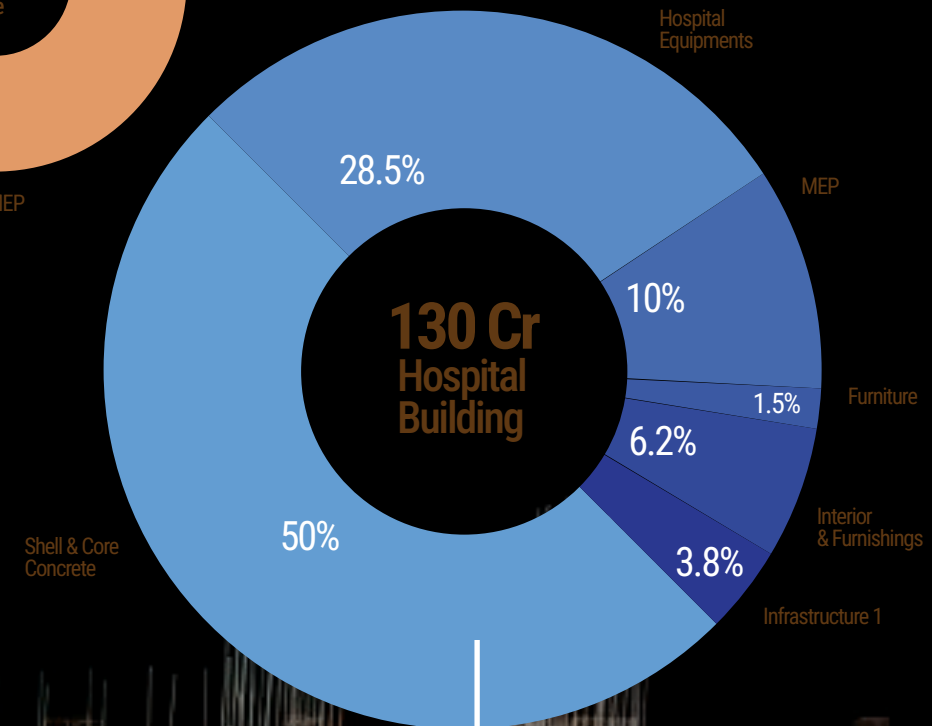
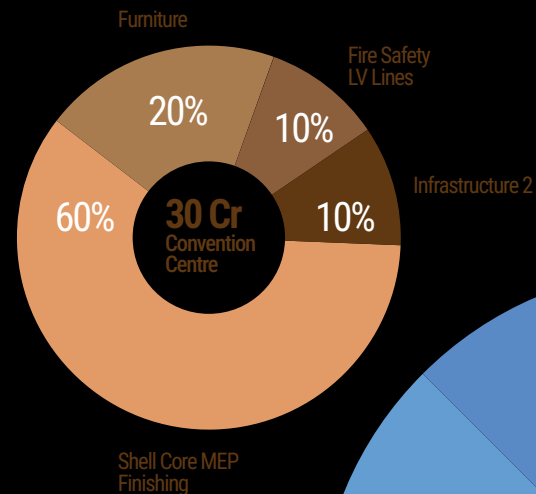
- Solar energy utilization
- Rainwater harvesting systems
- Natural light and ventilation
- Sewage & effluent treatment facilities
- Eco-friendly construction minimizing carbon footprint

20385 sq mt
Total Construction Area



Fund Utilization & Needs

₹160 crore investment is not just about building a hospital and convention centre—it's about preparing Western Vidarbha for the next 30 years of healthcare needs. The fund allocation is structured with clarity, purpose, and full transparency, ensuring every rupee contributes to creating a dependable, scalable system of care.



21.57Cr
Spent Already of 65Cr
Estimated for Shell & Core

PROJECT IMPACTS OVER 12 YEARS



190324+
Total Beneficiaries

220+
Medical Trainings

Average Montly
Patient Footfall | 2000

Average Monthly
Surgeries | 35+



52442
Total Beneficiaries

23K + Beneficiaries
Mobile Dispensaries

Samvedana
Village Cover | 20+

Total Outreach
Beneficiaries | 52K+



13+
Mental WellBeing
Events

Average Monthly
Patient Screening | 1300 +

Total
Beneficiaries | 25K +



Lokarpan
Dr. Hedgewar Hospital



Project 150
Bhumipujan



Lokarpan
Rugna Seva Sadan



Dharini - 2022
Women Centric Conference



12 years of Samvedana
Outreach Activities



12 Years of Training
& CME Activities



BMCCU - 32 Bed ICU
Lokarpan 2021



Where We Started From -

In 2012, we began with a simple vision that healthcare should be accessible, compassionate, and not-for-profit. With limited means but limitless commitment, Dr. Hedgewar Hospital grew from a humble initiative into a lifeline for lakhs across Vidarbha.





Our Hospital was conceived to offer an alternative to society an option for ethical, evidence-based, cost-effective, and comprehensive healthcare. Our unique model combines charitable healthcare with modern infrastructure, expertise, and the passion of young doctors. We have come a long way on this journey, and at this crucial point in our hospital's growth, we are looking toward a new phase with ambitious goals. As our roots extend deeper into remote rural and tribal areas, we are also advancing our tertiary healthcare infrastructure. We cherish engaging the fledgling generation of healthcare providers.

Smt. Pramilabai Jagtap
Samvedana Beneficiary



The Inclusive Collective



Dr. Shyamsundar Giri

Director Critical Care Medicine
Clinical Research & Academics

Dr. Yashodhan Bodhankar

Director Projects

Dr. Manasi Kavimandan

Director Samvedana Outreach
Human Resource



Dr. Hedgewar Hospital is not built by bricks alone it is built by people. Doctors, nurses, technicians, support staff, volunteers, donors, and well-wishers each one brings heart, skill, and purpose.

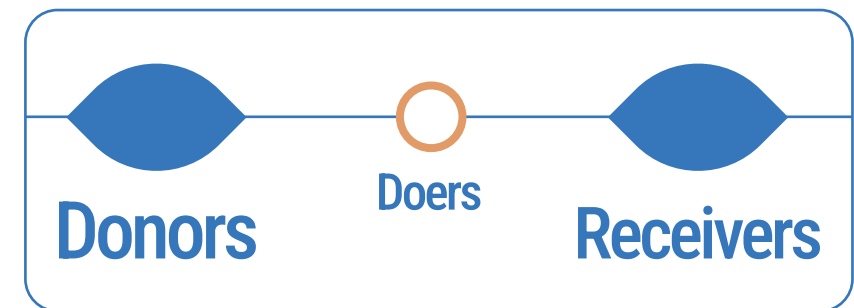
What makes us different is not just what we do, but how we do it together.

We are a collective of individuals from diverse backgrounds, united by a shared vision: to serve with humility, care with integrity, and grow with the community. From those who've been with us since day one to young professionals joining the mission today every hand shapes our future.

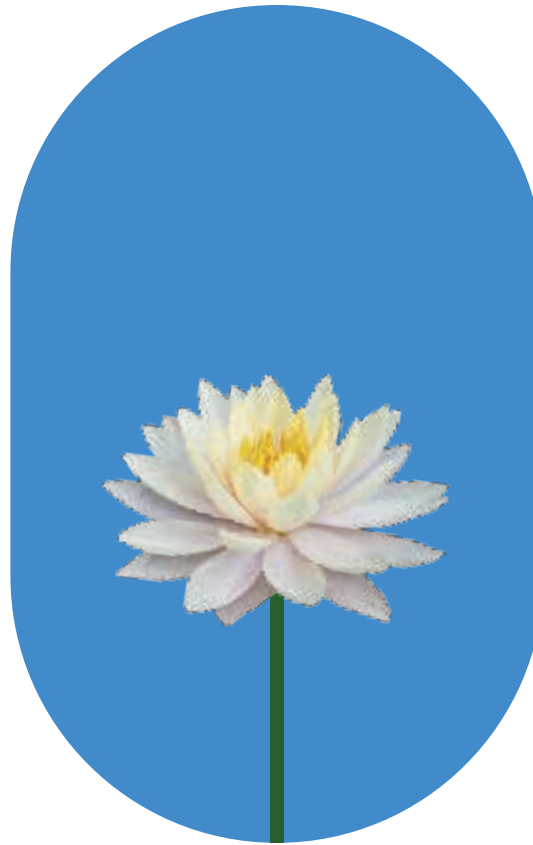
PARTNERS IN SOCIAL HEALTHCARE DELIVERY



4 WAY METHOD NOT FOR PROFIT HEALTHCARE MODEL



- 1** COST EFFECTIVE HEALTHCARE
- 2** INFORMATION EDUCATION COMMUNICATION
- 3** HEALTHCARE OUTREACH ACTIONS
- 4** PREVENTIVE HEALTHCARE AWARENESS



No Contribution is small.

Our Vision Has Blended till date based on
Trust of our Donors

। दीर्घमायुः कृणोतु मे ।



**Jankalyan
Seva Sanstha**
Easing Healthcare



Multispeciality
Charitable
Hospital



NIRAMAY
WELLNESS

Address : Vasudev-Saraswati Sankul,
Mudholkar Peth Corner, Badnera Road
Amravati - 444601

Website - www.hedgewarhospital.com

Phone - 0721-2566585, 7769086383

E-mail - janakalyansevasanstha@gmail.com; dhimsr@gmail.com



Bless everyone
with longer and healthier lives